



GMT MONTHLY MEMBERSHIP PROGRESS REPORT

Results as of: 10/31/2019

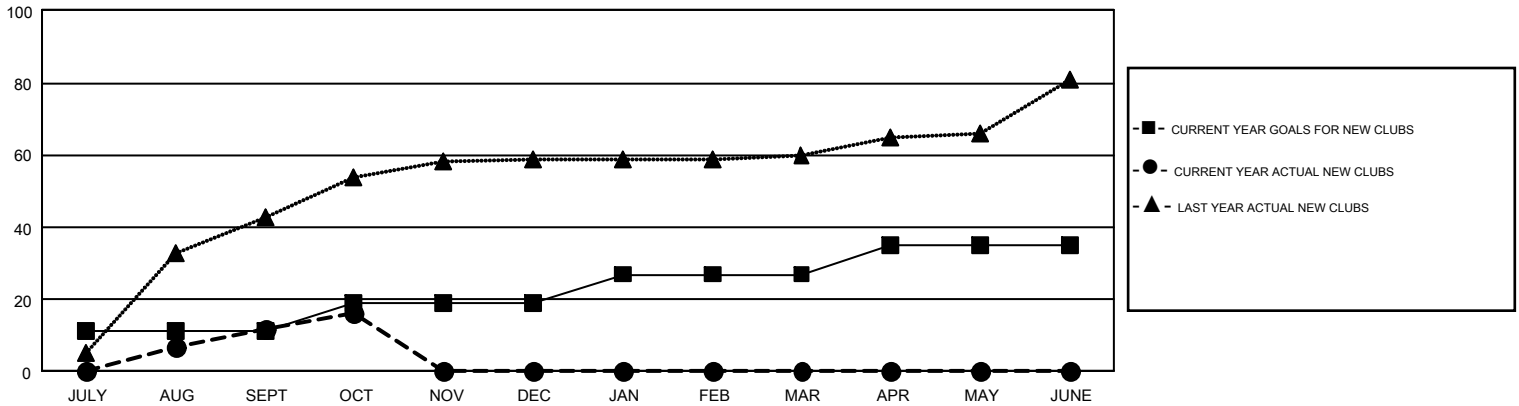
GMT Constitutional Area 7, Group C

GMT: OPEN

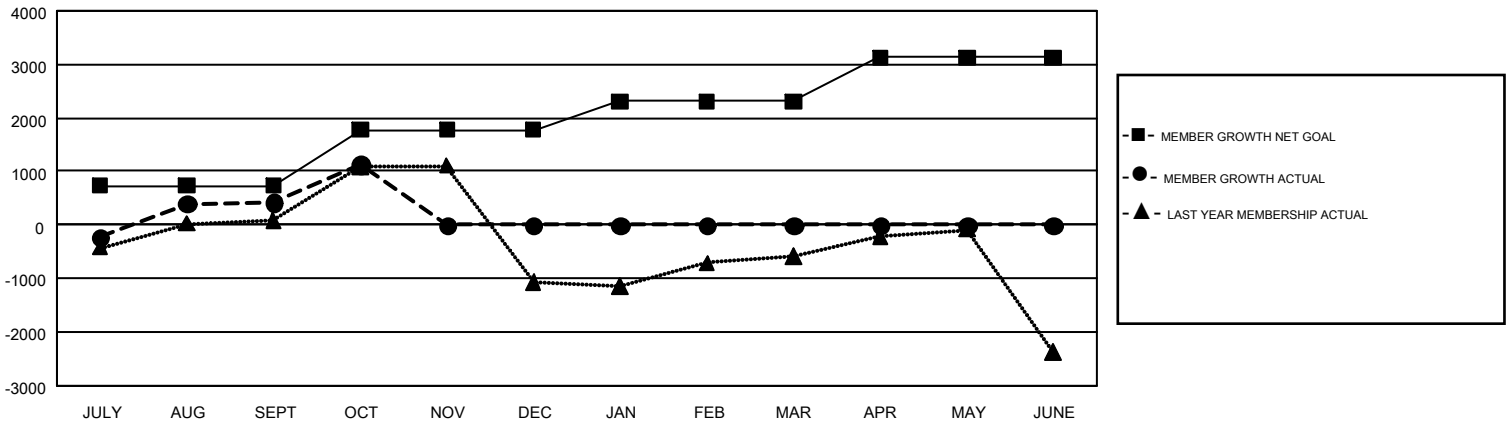
REPORT DOES NOT INCLUDE CLUBS IN UNDISTRICTED AREAS.

Clubs				Members			
RESULTS FOR 2019-2020				RESULTS FOR 2019-2020			
QUARTER	NEW CLUB GOAL	NEW CLUBS	DROPPED CLUBS	QUARTER	MEMBER GROWTH NET GOAL	MEMBER GROWTH ACTUAL	DROPPED MEMBERS ACTUAL (including transfers)
JULY/AUG/SEPT	11	12	24	JULY/AUG/SEPT	730	1,255	684
OCT/NOV/DEC	8	4	4	OCT/NOV/DEC	1050	917	212
JAN/FEB/MAR	8	0	0	JAN/FEB/MAR	530	0	0
APR/MAY/JUNE	8	0	0	APR/MAY/JUNE	820	0	0

GOALS AND ACTUAL NEW CLUBS CUMULATIVE



GOALS AND ACTUAL MEMBERS CUMULATIVE



DROPPED CLUBS: 28	334 CLUBS OF 668 ADDED 1 OR MORE NEW MEMBERS	GENDER DISTRIBUTION MALE 9,999 (48.51%) FEMALE 10,615 (51.49%)
DROPPED MEMBERS DECEASED 15 CLUB CANCELLED 48 OTHER 833 TOTAL 896	CLICK HERE FOR CUMULATIVE MEMBERSHIP DATA	TOTAL FAMILY UNIT MEMBERS 4,531 FAMILY MEMBERS PAYING HALF DUES 2,450